

OUR
BRAND OFFERS
AUTUMN/WINTER 2025/26



CRAFT-LASER 800 / 1500 S

LASER WELDING MACHINES

HAND-HELD, COMPACT DESIGN WITH LARGE COLOUR DISPLAY

Hand-held laser welding machines are the **newest revolution** in welding technology and have unbeatable advantages in the thin sheet metal sector compared to the previous conventional welding process.

ADVANTAGES LASER WELDING

compared to conventional welding processes

- + Hardly any warping, incredibly fast, incredibly good quality (even with very thin materials <1 mm)
- + Consumes approx. 70 % less energy
- + Quick and easy to learn
- + High process reliability
- + Extreme time savings with greatly reduced reworking at the same time
- + One of the lightest burners on the market at 680 g
- + 2-channel safety loop for maximum safety

CRAFT LASER ADVANTAGES:

- + Laser cleaning with up to 100 mm scan width with autofocus
- + 3 in 1 device: Welding / cutting / cleaning
- + Complete synergy - no more parameter lists
- + Service-friendly - no more tedious sending in

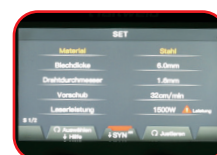
SIMPLE SERVICE:

- ▶ Burner and hosepack replaceable
- ▶ Laser cell can be replaced using swap procedure
- ▶ Interchangeable circuit boards and displays
- ▶ Laser centre offset can be corrected in the control system without calibration
- ▶ System can be upgraded and updated



WEAR PARTS SET

> inclusive



DISPLAY

> In German and English

CRAFT-LASER 800 / 1500 S:

- ▶ Fully integrated wire feed case – no parallel entry of feed data and laser power
- ▶ Extremely simple machine operation thanks to complete synergy characteristics
- ▶ Fully automatic control of power, wire feed, oscillation width, oscillation frequency, laser frequency, PWM, hot start, etc. depending on the material, material thickness and filler material diameter.
- ▶ High-resolution, easy-to-read displays ensure maximum ease of use even from a distance
- ▶ Maximum penetration depth of up to 6 mm thanks to 20 nm single-mode laser and specially developed wobble technology
- ▶ **2 in 1 machine: Welding, cleaning**
- ▶ Perfect cleaning with up to 100 mm scan width and autofocus:
 - ▶ Ideal for derusting, paint stripping and cleaning workpieces
 - ▶ Optimal for scale removal
 - ▶ Autofocus means there is no need to maintain a fixed distance

CRAFT-LASER 1500 S

> optional with trolley



SECURITY

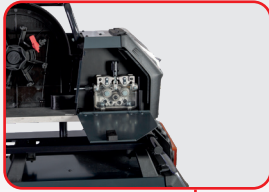
- 2-channel emergency stop system
- 2-channel safety interface for access monitoring (door contact switch)
- Key switch for the prevention of unauthorised use
- 2-channel fibre breakage detection and monitored QBH connection
- Safety instructions and manual activation of the laser release at each start
- Double push-button prevents unintentional activation of the laser emission

HANDY WELDING GUN

- > Very light and handy
- > Ergonomic handle shell
- > Rubberised handle ensures comfortable handling and insulation against workpiece conduction, long service life and scratch resistance
- > Easy replacement of the lenses if required. These are located under the flap in the gun and can be replaced without tools.
- > Protected from dirt by cover flap - protective glass and focus lenses can be replaced



**DISCOVER THE NEW
CRAFT-LASER 2000 WS ON
THE NEXT PAGE!**



WIRE FEED CASE

- › Precise wire feed with 4 rollers

HOSE PACKAGE

- › Double-sheathed hosepack and covered with additional leather protection - maximum robustness against cable breakage, wear and damage to the fibre conductor
- › Temperature stable, no problems even with aluminium despite back radiation
- › Stable wire feed, guided independently of the focus tube, ensures maximum feeding and process reliability



Craft-Laser 800



Craft-Laser 1500 S
with optional trolley

ASK FOR YOUR PERSONALISED OFFER!

MODEL DESIGNATION	CRAFT-LASER 800	CRAFT-LASER 1500 S
Art no.	1390008	1390015
WELDABLE MATERIAL THICKNESS		
Weldable material thickness Steel	0.8 – 3.0 mm	0.8 – 6.0 mm
Weldable material thickness Stainless steel	0.8 – 3.0 mm	0.8 – 6.0 mm
Weldable material thickness Aluminium	0.8 – 2.0 mm	0.8 – 4.0 mm
WIRE FEED		
Weldable wires, steel	0.8 – 1.2 mm	0.6 – 1.6 mm
Weldable wires, stainless steel	0.6 – 1.2 mm	0.6 – 1.6 mm
Weldable wires, aluminium	1.0 – 1.2 mm	1.0 – 1.6 mm
Wire feed unit	4 rolls	4 rolls
Wire feed speed	0.25 – 6 m/min	0.25 – 6 m/min
LASER		
Wobble	0 – 5.0 mm	0 – 5.0 mm
Wavelength of the radiation	1070 nm	1075 nm
Spectral width	3 – 4 nm	3 – 4 nm
Power of the red guide laser	200 µW	200 µW
Type	Single mode	Single mode
ELECTRICAL CONNECTION		
Connection cable length	5.0 m	5.0 m
Input power	3.0 kW	5.9 kW
Laser power	800 W	1500 W
COOLING		
Cooling type	Air-cooled	Air-cooled
STANDARDS AND AUTHORISATIONS		
Protection class	IP21S	IP21S
WPS	✓	
ELECTRICAL DATA		
Connection voltage	230V	230 V – 32 A CEE
Mains frequency	50 Hz	50 Hz
DIMENSIONS AND WEIGHTS		
Dimensions (L x W x H) approx.	680 x 360 x 680	750 x 600 x 1000 mm
Weight of wire feed case	–	11.5 kg
Weight approx.	38 kg	53 kg

SCOPE OF DELIVERY

	800	1500 S
Welding gun	x	x
Gas hose 4 m	x	x
5 protective glasses for laser welding gun	x	x
2 conveyor rollers 0.8 / 1.0 V-groove	x	x
2 conveyor rollers 1.0 / 1.2 V-groove	x	x
2 conveyor rollers 1.2 / 1.6 V-groove		x
2 conveyor rollers 0.8 / 1.0 U-groove	x	x
2 conveyor rollers 1.0 / 1.2 U-groove	x	x
2 conveyor rollers 1.2 / 1.6 U-groove		x
3 nozzles AS-12 for laser welding gun		x
3 nozzles ES-12 for laser welding gun		x
3 nozzles DS-16 for laser welding gun	x	
3 nozzles BS-16 for laser welding gun		x
3 cutting nozzles	x	x
Laser cleaning accessories	x	x
Filter pressure regulator 1/4" 16 bar	x	x
Plug nipple 1/4" external thread	x	x
Double nipple G 1/4" x G 1/4"	x	x
Faceshield FS 1 (blue-grey visor)	x	x

CRAFT-LASER 2000 WS

LASER WELDING MACHINES

HAND-HELD, COMPACT DESIGN WITH LARGE COLOUR DISPLAY

Hand-held laser welding machines are the **newest revolution** in welding technology and have unbeatable advantages in the thin sheet metal sector compared to the previous conventional welding process.

Water-cooled, handheld laser welding device is built for heavy-duty applications and the highest demands. Maximum focus stability at 100% duty cycle guarantees maximum process reliability.

SPECIAL TECHNICAL FEATURES

- ▶ Water-cooled 2000W - 20nm single-mode laser source with 100% duty cycle
- ▶ The specially developed water-cooled laser gun and improved optical systems guarantee maximum focus stability.
- ▶ **Programme selection via laser gun possible**
- ▶ High-performance water cooling from the laser cutting area guarantees maximum process reliability.

RANGE OF FUNCTIONS

- ▶ 2-in-1 machine: Welding and cleaning
- ▶ Laser cleaning is ideal for paint removal, rust removal and other types of removal.
- ▶ Optional Ethernet-IP interface for robot applications
- ▶ **Optional: Double wire feed**

SECURITY

- ▶ 2-channel emergency stop system
- ▶ 2-channel safety interface for access monitoring (door contact switch)
- ▶ Key switch to prevent unauthorised use
- ▶ 2-channel fibre breakage detection and monitored QBH connection
- ▶ Safety instructions and manual activation of the laser release at each start
- ▶ Double push-button prevents unintentional activation of the laser emission

THE CRAFT-LASER 2000 WS OFFERS ALL THE ADVANTAGES OF THE CRAFT-LASER 1500 S AND MUCH MORE!



MODEL DESIGNATION	CRAFT-LASER 2000WS
Art no.	1390020

WELDABLE MATERIAL THICKNESS	
Weldable material thickness Steel	0.8 – 8.0 mm
Weldable material thickness Stainless steel	0.8 – 8.0 mm
Weldable material thickness Aluminium	0.8 – 7.0 mm

WIRE FEED	
Weldable wires, steel	0.6 – 1.6 mm
Weldable wires, stainless steel	0.6 – 1.6 mm
Weldable wires, aluminium	1.0 – 1.6 mm
Wire feed unit	4 rolls
Wire feed speed	0.25 – 6 m/min

LASER	
Wavelength of the radiation	1080 nm

COOLING	
Cooling type	water-cooled

STANDARDS AND AUTHORISATIONS	
Protection class	IP21S
WPS	✓

ELECTRICAL DATA	
Connection cable length	10 m
Input power ~ 50 Hz	7.5 kW / 400 V - CEE 32A

DIMENSIONS AND WEIGHTS	
Dimensions (L x W x H) approx.	960 x 600 x 1000 mm
Weight of wire feed case	11.5 kg
Weight approx.	150 kg

ASK FOR YOUR PERSONALISED OFFER!

- SCOPE OF DELIVERY**
- Welding gun
 - VarioProtect LASER-M laser welding helmet
 - Wire feed nozzle 0.8 mm
 - Wire feed nozzle 1.0 mm
 - Wire feed nozzle 1.2 mm
 - Wire feed nozzle 1.6 mm
 - 5 safety glasses
 - Cutting nozzle
 - Laser cleaning set
 - Feed roller 0.8 - 1.0 mm V-groove
 - Feed roller 1.0 - 1.2 mm V-groove
 - Feed roller 1.2 - 1.6 mm V-groove
 - Feed roller 1.0 - 1.2 mm V-groove
 - Feed roller 0.8 - 1.0 mm V-groove
 - Feed roller 1.2 - 1.6 mm V-groove

LASER SAFETY CABINS

Neu

Laser safety cabin 3850 x 3900 x 2500 mm / 4000 x 4050 x 3000 mm / 6125 x 4050 x 3000 mm

- ▶ Made from powder-coated sheet steel (RAL 7035)
- ▶ Self-supporting, stable construction for long-lasting use
- ▶ Manufactured in modular design - simple and quick assembly
- ▶ Compatible with hand-held and stationary laser welding machines
- ▶ Effective heat dissipation from the laser welding cabin prevents overheating
- ▶ Large, smooth-running sliding door requires no swivelling range
- ▶ Increased productivity thanks to the ability to store raw and finished parts in the cabin

Model 4000 x 4050 x 3000 mm & Model 6125 x 4050 x 3000 mm

- ▶ Better material flow, as the cabins can be accessed with pallet trucks, trolleys and even smaller forklifts



3850 x 3900 x 2500 mm



4000 x 4050 x 3000 mm



Made in Germany



6125 x 4050 x 3000 mm

Incl. safety package incl. complete CE for Craft-Laser 800 / 1500S

Security package contains the following components:

- ▶ Switch cabinet with discrete PILZ safety relay for monitoring the protective circuits
- ▶ Contactless door contact switches from PILZ
- ▶ External emergency stop
- ▶ Internal emergency stop
- ▶ Laser warning light

Would you like advice?

Your local specialist dealer will be happy to advise you on all matters. We would be happy to advise you on this topic and refer you to a specialist dealer in your area.



Tim Büles
Contact: +49(0)951 96555 425

YOUR PERSONALISED PRICE AND special sizes on request!

Accessories	Art. no.
Extraction package for laser safety cabin 1 - 3	1392050

Model		3850 x 3900 x 2500 mm	4000 x 4050 x 3000 mm	6125 x 4050 x 3000 mm
Art no.		1392000 **	1392005 **	1392010 **
Dimensions (L x W x H) approx.	mm	3850 x 3,900 x 2500	4000 x 4,050 x 3000	6125 x 4,050 x 3000
Transport surcharge ²⁾		TVZSLASER	TVZSLASER	TVZSLASER

The products shown on this page are excluded from the "3-year Stürmer guarantee".
2) Explanation of transport surcharge – see overleaf, details of TPZRS plus VAT

VarioProtect LASER-M / LASER-M AIR TH3 – Laser welding helmet specially designed for laser welding and cutting applications

Neu

- ▶ Laser lens with variable tinting offers complete protection from direct laser exposure as well as from reflection, scattering, diffraction and divergence of the laser beam
- ▶ Developed for EN207 OD10 @ 1064nm
- ▶ Provides comprehensive protection to prevent

- eye burns, retinal damage and other tissue damage
- ▶ Ultra-clear vision - exceptional clarity and detail with Light State 2.0 laser lens with variable tinting
- ▶ Intelligent adjustment - number of colours,

- delay and sensitivity can be easily adjusted via user-friendly control panel with LED indicators
- ▶ Respiratory protection with a total filtration efficiency of >99.997%



VarioProtect LASER-M



VarioProtect LASER-M AIR TH3



Model		VarioProtect LASER-M / VarioProtect LASER-M AIR TH3
Art. no.		1657060 / 1657065
Working temperature	°C	-10 – +55
Storage temperature	°C	-20 – +70
Response timelight/dark	ms	1 / 25000s
UV/IR protection		DIN 16
Light level		2.0
Dark protection level		DIN 4-8/8-12
Solar cells		Yes
Viewing window (W x H)	mm	96 x 46.5
Cassette (L x B x H)	mm	110 x 90 x 9
Sensors		2
Laser protection		1000-1100 D LB7 + IR LB8
Optical density		1000-1100 OD8
Special modes		GRIND / CUT / MIX / DARK
Dimensions (L x W x H) approx.	mm	270 x 230 x 215
Weight approx.	kg	0.87

Intelligent setting

- The number of colours, delay and sensitivity can be easily adjusted via a user-friendly control panel with LED displays

Scope of delivery

- ▶ TH3 fresh air supply incl. hose

Accessories	Art. no.
Outer attachment disc (PU 10 pcs.)	1663050
Inner attachment disc (PU 10 pcs)	1663051
Headband	1663052
Forehead welding band	1663053
Welding helmet housing	1663054
Filter cassette	1663055
Lithium battery 3V CR2450	1662034

Face Shield FS 1 –

The safe and comfortable complete solution for eyes and face during hand-held laser welding

- ▶ The Face Shield (FS1) offers certified laser protection in accordance with EN 207
- ▶ New standards in wearing comfort
- ▶ only 386 g total weight
- ▶ Perfectly balanced thanks to an ingenious folding mechanism with spring-loaded coupling rods
- ▶ Height and width-adjustable headrest with Uvex Spiderneck neck support for perfect ergonomic relief



Made in Germany

Model		FS 1 (golden visor)	FS 1 (blue-grey visor)
Art. no.		1872015	1872020
Standards		EN 166, EN 207 full protection	EN 166, EN 169, EN 207 full protection, EN 208 adjustment protection
Coating		Scratch-resistant outside / anti-fog inside	Scratch-resistant outside / anti-fog inside
Colour view		Good	Outstanding
Version		FS1	FS1
Filters		P1P18	P1P22
Filter thickness approx.	mm	2	2
Filter colour		Gold	Blue-grey
Filter material		Plastic	Plastic
Filter technology		Absorption filter	Absorption filter
Visual brightness		very good	Sufficient
Protected area		Infrared, near infrared, ultra-violet	Infrared, near Infrared, visible, ultraviolet
VLT approx.	%	47	12
Protection level		M	M
Weight approx.	g	386	386

uvex | laservision

Laser safety goggles LSB 1 - Large field of vision without compromising protection

- ▶ Ergonomic design and adjustable temples for every head shape
- ▶ Flat temples for wearing under safety helmets
- ▶ Thanks to the special anti-fog coating, visibility remains clear even in high humidity and changing temperature conditions
- ▶ Lightweight construction for a comfortable fit



Scope of delivery



Technical data		LSB 1
Art. no.		1872050
Protection of the wavelength	nm	200-450 / 630-660 / 800-1100
Material		TR90 frame, PC filter
Permeability	%	18
Optical density		200 - 450nm OD 4+ 630 - 660nm OD 4+ 800 - 1.100nm OD 6+
LB protection level		316 - 440nm D LB5 + IR LB6 440 - 450nm DIR LB4 630 - 660nm DIR LB4 800 - 1080nm DIR LB6 LP S CE
Dimensions (L x W x H) approx.	mm	161 x 156 x 49
Weight approx.	g	40.2

CRAFT-MIG-PRO SYNERGIC SERIES

INFINITELY REGULATABLE. UNIVERSALLY APPLICABLE

INDUSTRIAL MACHINES FOR STEEL, STAINLESS STEEL AND ALUMINIUM

LCD DISPLAY

Particularly clear and simple operation via LCD display

INVERTER

Modern and ultra-robust inverters in the latest modular design.

SYNERGY FUNCTION

The synergy function allows the material thickness and power to be steplessly adjusted and the wire to adapt

SETTING IN THREE STEPS

Quickly achieve the perfect result after adjustment in three steps: (1) Gas, material, diameter (2) 2/4 cycle, points, interval (3) Material thickness

CRAFT-MIG PRO 353WS / 503WS

► Case system incl. 5m Zwipa

3-YEAR CRAFTWELD - WARRANTY

We stand by our quality!

STEPLESS CONTROLLABILITY

Sensitive adjustment thanks to stepless controllability. Your advantage: Quickly achieve the perfect result

STANDARD EQUIPMENT

2-stroke/4-stroke, spot and interval welding, gas test function, adjustable throttle, operating and overload indicator, temperature-controlled fan

HIGH DUTY CYCLE

High duty cycle paired with maximum robustness - made for the toughest applications

BASE MATERIALS

Structural steels, unalloyed and low-alloyed materials, ferritic/austenitic CrNi steels, aluminium alloys

ADJUSTABLE THROTTLE FUNCTION

to give the arc the desired hardness

Neu



CRAFT-MIG PRO 253 SYNERGIC



CRAFT-MIG PRO 323 SYNERGIC



CRAFT-MIG PRO 353 WS SYNERGIC



CRAFT-MIG PRO 503 WS SYNERGIC

Neu

Model		CRAFT-MIG.PRO 253 Synergic	CRAFT-MIG PRO 323 Synergic	CRAFT-MIG PRO 353 WS Synergic	CRAFT-MIG PRO 503 WS Synergic
Art no.		1361151	1361155	1361160	1361165
Setting range					
Setting range		30 – 250	30 – 315	30 – 350	30 - 500
Gearshifts		Stepless	Stepless	Stepless	Stepless
Duty cycle					
Duty cycle at max. current 40°C	%	60	40	60	60
Current at duty cycle 60% 40°C	A	250	260	350	500
Current at duty cycle 100% 40°C	A	195	200	275	390
Power consumption					
MIG/MAG power consumption	kVA	11.2	14.2	15.8	25.4
Electrode power consumption	kVA	12.5	7.5	13.2	21.2
Cooling					
Cooling type		Intelligent	Intelligent	Intelligent	Intelligent
Torch cooling		Gas	Gas	Water	Water
Wire feed					
Weldable wires, steel	mm	0.6 – 1.2	0.8 – 1.2	0.8 – 1.2	0.8 – 1.6
Weldable wires, stainless steel	mm	0.8 – 1.2	0.8 – 1.2	0.8 – 1.2	0.8 – 1.6
Weldable wires, aluminium	mm	1.0 – 1.2	1.0 – 1.2	1.0 – 1.2	1.0 – 1.6
Wire feed unit	Rollers	4	4	4	4
Wire feed speed	m/min	1.0 – 22	1.0 – 24	1.0 – 24	1.0 – 24
Wire feed rolls, driven	Rollers	4	4	4	4
Conveyor rollers					
Feed roller diameter	mm	0.6 – 1.0	0.8 – 1.0	1.0 – 1.2	1.0 – 1.2
Electrical connection					
Required generator output	kVA	20	20	21	28
Positive mains voltage tolerance	%	10	10	10	10
Negative mains voltage tolerance	%	10	10	10	10
Open circuit voltage	V	75	75	77	94
Connection cable length	m	3	5	5	5
Power consumption	A	18	15	17.1	28.4
Connection voltage ~50 Hz	V	400	400	400	400
Dimensions and weights					
Dimensions (L x W x H)	mm	1100 x 530 x 850	930 x 490 x 930	930 x 490 x 930	930 x 490 x 930
Weight	kg	52.5	39	59	59

ASK FOR YOUR PERSONALISED QUOTE OR REQUEST FOR A FREE AND NON-BINDING DEMONSTRATION!

MIG/MAG WELDING TORCH, GAS-COOLED

- ▶ Handle with perfect balance for all welding work
- ▶ Additional optimum hold thanks to integrated rubber insert
- ▶ Ball joint enables better balance of the handle, reduces the weight and increases the welder's freedom of movement
- ▶ Hose package with high resistance to friction, weather influences and chemical substances and maximum flexibility
- ▶ Support for multifunctional burner with display



Designation		Art. no.
SMB36 3m	for CRAFT-MIG PRO 323	1090363
SMB36 4m	for CRAFT-MIG PRO 323	1090364
SMB36 5m	for CRAFT-MIG PRO 323	1090365
SMB400 3m	for CRAFT-MIG PRO 353 WS / 503 WS	1090403
SMB400 4m	for CRAFT-MIG PRO 353 WS / 503 WS	1090404
SMB400 5m	for CRAFT-MIG PRO 353 WS / 503 WS	1090405

CONVEYOR ROLLERS

Designation	Art. no.
Single steel and stainless steel wire	
Conveyor roller 0.8 - 1.0 mm, V-groove	1016010
Conveyor roller 1.0 - 1.2 mm, V-groove	1016012
Conveyor roller 1.2 - 1.6 mm, V-groove	1016016
Individual conveyor rollers for filler wire	
Conveyor roller 1.0 - 1.2 mm, K-groove	1016202
Individual conveyor rollers for aluminium wire	
Conveyor roller 0.8 - 1.0 mm, U-groove	1016110
Conveyor roller 1.0 - 1.2 mm, U-groove	1016112
Conveyor roller 1.2 - 1.6 mm, U-groove	1016116

Technical data	SMB36	SMB400
Cooling	gas-cooled	water-cooled
Shielding gas	CO ₂ , mixed gas	CO ₂ , mixed gas
Welding current CO ₂	300 A	400 A
Welding current Mixed gas	270 A	350 A
Duty cycle	60 %	100 %
Wire diameter	0.8 – 1,2 mm	0.8 – 1,6 mm
Contact tip	M6	M8

MIG/MAG INVERTER WELDING MACHINE – ROBUST INDUSTRIAL SERIES – MADE FOR HEAVY-DUTY USE

- ▶ High duty cycle of 60% at maximum power ensures longer welding times without overheating, ideal for large projects
- ▶ State-of-the-art inverter technology in modular design ensures maximum reliability combined with maximum efficiency
- ▶ Synergy characteristics for steel, stainless

- steel and aluminium - 3 steps to the perfect result
- ▶ Adjustable choke enables precise adjustment of the arc characteristics
- ▶ LCD display for simple and precise setting of welding parameters
- ▶ Sophisticated cooling system with

- encapsulated air duct for efficient heat dissipation ensures stable welding performance even in the toughest applications
- ▶ Suitable for use on the generator
- ▶ Note: Machine is supplied without accessories



Standard trolley with lowered gas cylinder holder

Integrated water cooling



- User-friendly LCD display enables precise setting of welding parameters
- Simple setting with plain text display
- All welding parameters and settings at a glance

ASK FOR YOUR PERSONALISED OFFER!

Model	CRAFT-MIG.PRO 403 W Synergic	
Art no.	1361162	
Setting range		
TIG DC	A	10 – 400
Electrode	A	10 – 400
MIG soldering		30 – 400
Duty cycle		
at max. current 40°C	%	60
Current at duty cycle 60% 40°C	A	400
Current at duty cycle 100% 40°C	A	310
Power consumption		
MIG/MAG	kVA	16.5
Electrode	kVA	17.9
TIG DC	kVA	13.6
Power factor	cos phi	0.92
Efficiency	%	87.7
Cooling		
Cooling type		AF
Torch cooling		Water
Water tank volume	l	5

Wire feed		
Weldable wires, steel	mm	0.8 – 1.2
Weldable wires, stainless steel	mm	0.8 – 1.2
Weldable wires, aluminium	mm	1.0 – 1.2
Weldable wires, filler wire	mm	0.8 – 1.2
Wire feed unit	Rollers	4
Wire feed rolls, driven	Rollers	4
Electrical connection		
Required generator output	kVA	>15
Open circuit voltage	V	Electrode 75 TIG 75 MIG/MAG 75
Power consumption	A	25.9
Electrical connection ~ 50 Hz	V	400 - CEE 32A
Standards and authorisations		
Standard		EN 60974-1; EN 60974-10
EMC - class		A
Dimensions and weights		
Dimensions (L x W x H) approx.	mm	1100 x 530 x 850
Weight approx.	kg	66.5

Scope of delivery
▶ Gas hose 4 m

CRAFT-MIG.PRO 201P MULTI SYNERGIC

MIG/MAG WELDING MACHINE - 4 IN 1 SYSTEM - MMA, MIG/MAG, TIG AC/DC, TIG DC IDEAL MACHINE FOR EVERY ASSEMBLY VEHICLE

- ▶ MMA AC and MMA DC welding - ideal for all common electrode types
- ▶ MIG/MAG synergy characteristics - 3 steps to the welding result, machine is perfect for thin sheet metal welding and up to a maximum sheet thickness of 6 mm in a single layer
- ▶ Integrates all functions of our Craft-Tig Pro 201 P AC / DC - Welds all common materials including aluminium. In addition, the spot function enables perfect stapling
- ▶ Inverter technology ensures a stable welding current and work with different material thicknesses
- ▶ Automatic voltage adjustment ensures stable operation
- ▶ PFC control enables use on cable drums and smoothes current consumption
- ▶ LCD display for easy setting of welding parameters
- ▶ Thermal overload protection for maximum safety
- ▶ Suitable for use on the generator
- ▶ 3-Year Craftweld warranty
- ▶ Note: Machine is supplied without accessories



ASK FOR YOUR PERSONALISED OFFER!

Model		CRAFT-MIG.PRO 201P Multi Synergic
Art no.		1361145
Setting range		
MIG/MAG	A	30 – 200
TIG DC	A	10 – 200
Electrode	A	10 – 200
Duty cycle		
at max. current 40°C	%	30
Current at duty cycle 60% 40°C	A	140
Current at duty cycle 100% 40°C	A	110
Power consumption		
MIG/MAG	kVA	6.2
Electrode	kVA	7
TIG DC	kVA	5.1
Power factor	cos phi	0.999
Efficiency	%	80
Conveyor rollers		
Feed roller diameter	mm	0.8 - 1.0

Wire feed		
Weldable wires, steel	mm	0.6 – 1.0
Weldable wires, stainless steel	mm	0.8 – 1.0
Weldable wires, aluminium	mm	0.8 – 1.0
Weldable wires, CuSi	mm	0.8 – 1.0
Weldable wires, filler wire	mm	0.8 – 1.0
Wire feed unit	Roll	2
Wire feed speed	m/min	1.5 – 16.5
Electrical connection		
Required generator output	kVA	7
Open circuit voltage	V	72
Power consumption	A	26.8
Electrical connection ~ 50 Hz	V	110/230
Standards and authorisations		
EMC - class		A
Dimensions and weights		
Dimensions (L x W x H)	mm	630 x 240 x 420
Weight approx.	kg	20

Scope of delivery

- ▶ Gas hose 4 m

CRAFT-MIG. PRO PULSE SERIES

HIGH-PERFORMANCE IMPULSE WELDING MACHINES

MADE FOR HEAVY-DUTY USE

LCD DISPLAY

Particularly clear and simple operation via LCD display

INVERTER

Modern and ultra-robust inverters in the latest modular design.

SYNERGY FUNCTION

The synergy function allows the material thickness and power to be steplessly adjusted and the wire to adapt

SETTING IN THREE STEPS

Quickly achieve the perfect result after adjustment in three steps: (1) Gas, material, diameter (2) 2/4 cycle, points, interval (3) Material thickness

STEPLESS CONTROLLABILITY

Sensitive adjustment thanks to stepless controllability. Your advantage: Quickly achieve the perfect result

STANDARD EQUIPMENT

2-stroke/4-stroke, spot and interval welding, gas test function, adjustable throttle, operating and overload indicator, temperature-controlled fan

HIGH DUTY CYCLE

High duty cycle paired with maximum robustness - made for the toughest applications

3-YEAR CRAFTWELD - WARRANTY

We stand by our quality!

CRAFT-MIG PRO 201 P PULSE/ CRAFT-MIG PRO 253 PULSE

Portable for mobile use and optionally with water cooling (Art-No: 1362900) and trolley (1362901)



CRAFT-MIG PRO 201 P PULSE

CRAFT-MIG PRO 253 PULSE

Neu



CRAFT-MIG.PRO 353 PULSE W

CRAFT-MIG PRO 353WS PULSE

CRAFT-MIG PRO 503WS PULSE

Neu

Model		Neu		Neu		CRAFT-MIG. PRO 503WS Pulse	CRAFT-MIG. PRO 503WS Pulse
		CRAFT-MIG. PRO 201 P Pulse	CRAFT-MIG. PRO 253 Pulse	CRAFT-MIG. PRO 353 Pulse W	CRAFT-MIG. PRO 353WS Pulse		
Art no.		1362021	1362025	1362033	1362035	1362050	
Setting range							
Setting range		20 – 200	30 – 315	10 - 350	30 – 350	30 - 500	
Gearshifts		Stepless	Stepless	Stepless	Stepless	Stepless	
Duty cycle							
Duty cycle at max. current 40°C	%	60	40	60	60	60	
Current at duty cycle 60% 40°C	A	165	245	350	350	500	
Current at duty cycle 100% 40°C	A	130	200	270	275	390	
Power consumption							
MIG/MAG power consumption	kVA	14.2	14.2	12.4	15.8	25.4	
Electrode power consumption	kVA	7.5	7.5	9.8	13.2	21.2	
Cooling							
Cooling type		Intelligent	Intelligent	Intelligent	Intelligent	Intelligent	
Torch cooling		Gas	Gas	Gas	Water	Water	
Wire feed							
Weldable wires, steel	mm	0.6 – 1.2	0.8 – 1.2	0.8 - 1.6	0.8 – 1.2	0.8 – 1.6	
Weldable wires, stainless steel	mm	0.6 – 1.2	0.8 – 1.2	0.8 - 1.6	0.8 – 1.2	0.8 – 1.6	
Weldable wires, aluminium	mm	1.0 – 1.2	1.0 – 1.2	1.0 - 1.6	1.0 – 1.2	1.0 – 1.6	
Wire feed unit	Rollers	4	4	4	4	4	
Wire feed speed	m/min	1.5 – 24	1.0 – 24	1.5 - 24	1.0 – 24	1.0 – 24	
Wire feed rolls, driven	Rollers	4	4	4	4	4	
Electrical connection							
Required generator output	kVA	>7	20	13	21	28	
Positive mains voltage tolerance	%	10	10		10	10	
Negative mains voltage tolerance	%	10	10		10	10	
Open circuit voltage	V	94.4	75	76	77	94	
Connection cable length	m	3	5		5	5	
Power consumption	A	20.9	15	26.5	17.1	28.4	
Connection voltage	V/Hz	230 /~50	400 /~50	400 /~50	400 /~50	400 /~50	
Dimensions and weights							
Dimensions (L x W x H)	mm	580 x 230 x 400	835 x 510 x 720	1,100 x 530 x 850	835 x 510 x 720	935 x 550 x 1325	
Weight	kg	25	39	66.5	59	59	

ASK FOR YOUR PERSONALISED QUOTE OR REQUEST FOR A FREE AND NON-BINDING DEMONSTRATION!

MIG/MAG WELDING TORCH, WATER-COOLED

- ▶ Ideal if the best possible welding results are to be achieved with a torch neck geometry
- ▶ Thanks to the slim, straight handle, the torch sits neutrally in the hand and allows different postures and flexibility in the torch neck alignment
- ▶ Very hard-wearing and particularly well protected against mechanical deformation thanks to the double fixation of the burner neck
- ▶ Coated torch necks and robust design for use at high process temperatures
- ▶ Durable, screw-on gas nozzles with integrated, replaceable splash guard
- ▶ Proven ergonomic handle - provides support in all positions
- ▶ Support for multifunctional burner with display



CONVEYOR ROLLERS

Designation	Art. no.
Single steel and stainless steel wire	
Conveyor roller 0.8 - 1.0 mm, V-groove	1016010
Conveyor roller 1.0 - 1.2 mm, V-groove	1016012
Conveyor roller 1.2 - 1.6 mm, V-groove	1016016
Individual conveyor rollers for filler wire	
Conveyor roller 1.0 - 1.2 mm, K-groove	1016202
Individual conveyor rollers for aluminium wire	
Conveyor roller 0.8 - 1.0 mm, U-groove	1016110
Conveyor roller 1.0 - 1.2 mm, U-groove	1016112
Conveyor roller 1.2 - 1.6 mm, U-groove	1016116

Technical data	W 340D	W 440D	W 540D
Shielding gas	CO ₂ , mixed gas	CO ₂ , mixed gas	CO ₂ , mixed gas
Welding current CO ₂	400 A	500 A	600 A
Welding current Mixed gas	350 A	450 A	550 A
Duty cycle	100 %	100 %	100 %
Wire diameter	0.8 – 1,2 mm	0.8 – 1,6 mm	1.0 – 1,6 mm

Model		Trolley for Craft-Mig	Feed case	Cooling unit 400V
Art no.		1362035-5	1362035-2	1362035-4
Weight				
Weight (net)	kg	31.5	20.5	16
Weight (gross)	kg	34	23	18.5

Designation	Art. no.
W 340D 3m	1059940
W 340D 4m	1059941
W 340D 5m	1059942
W 440D 3m	1059943
W 440D 4m	1059944
W 440D 5m	1059945
W 540D 3m	1059946
W 540D 4m	1059947
W 540D 5m	1059948

TIG INVERTER CRAFT-TIG PRO 201DC P PULSE/ CRAFT-TIG PRO 283 / CRAFT-TIG PRO 201 AC/DC P PULSE

BUILT USING MODERN INVERTER TECHNOLOGY

UNIVERSALLY APPLICABLE

For welding all common types of electrodes

PROTECTION CLASS IP 21S

Suitable for use on generators, for example in workshops, schools, metal construction, on building sites or for farmers

POWER FACTOR CORRECTION PFC

Power factor correction PFC for problem-free use even on cable reels

LC DISPLAY

Precise setting and display of welding parameters via large LC display

TIG PULSES

TIG pulsing at 999 Hz enables welding with reduced heat input

HF HIGH-FREQUENCY IGNITION:

HF high-frequency ignition ignites during TIG welding without touching the workpiece

STAPLING FUNCTION

Equipped with stapling function 0.2 s

MULTIVOLTAGE

Multi-voltage from 110 to 230 volts

10 PROGRAMMES

storable

FAN

Quiet-running fan with good heat dissipation for long switch-on times

CRAFT-TIG PRO 201 AC/DC P PULSE:

- ▶ AC triangle wave welding output: Reduced heat input for the same current setting, particularly useful for welding thin metal
- ▶ Alternating current sine wave welding output: Traditional AC TIG welding waveform, quieter, "softer" arc characteristics
- ▶ AC square wave: Focussed arc for maximum penetration, fast travel speed with optimum directional control

SCOPE OF DELIVERY:

Welding cable 16 mm² 4 m with 300 A terminal
Earth cable 16 mm² 4 m with 300 A terminal
TIG torch SR26, 4 m
Gas hose 12x6 mm 4 m
Pressure reducer, large

Equipment	CRAFT-TIG PRO 201DC P Pulse	CRAFT-TIG PRO 201 AC/DC P Pulse
Power factor correction	✓	✓
TIG pulsing process	✓	✓
MMA process	✓	✓
LC display	4"	4"
Single Spot	✓	✓
Multi Spot	✓	✓
Water cooling connection		✓

OPERATION

- SELECT BUTTON**
▶ HF/TIG, Lift-Arc and MMA
- SELECTOR BUTTON - DC**
▶ AC / DC
- SELECTOR BUTTON - 2T / 4**
- SELECTOR BUTTON - NO PULSE / PULSE / SINGLE SPOT / MULTI SPOT**
- SELECTOR BUTTON JOB MEMORY**
- PARAMETER SETTING**
▶ Gas lead time, starting current, current rise time



- SELECT BUTTON**
▶ Welding current
- PARAMETER SETTING**
▶ Electricity setback time, end of electricity, gas run-on time
- WATER COOLING**
- TUNGSTEN ELECTRODE SETTING**
- USED FOR AC WELDING**
▶ Setting balance and frequency



CRAFT-TIG PRO 201DC P PULSE



CRAFT-TIG PRO 201 AC/DC P PULSE



ASK FOR YOUR PERSONALISED OFFER!

Model		CRAFT-TIG PRO 201DC P Pulse	CRAFT-TIG PRO 201 AC/DC P Pulse
Art no.		1364201	1364212
Electrode			
Weldable electrodes	mm	1.6 – 4.0	1.6 – 4.0
Setting range			
TIG setting range	A	10 – 200	10 – 200
Setting range for electrode	A	10 – 200	10 – 200
Duty cycle			
Duty cycle at max. current 40°C, TIG	%	50	35
Duty cycle at max. current 40°C, Electrode	%	30	35
Current at 100% duty cycle, 40°C TIG	A	145	110
Current at duty cycle 100% 40°C Electrode	A	110	110
Power consumption			
Power consumption TIG	kVA	4.7	4.8
Electrode power consumption	kVA	6.9	7
Electrical connection			
Required generator output	kVA	>9	>9
Open circuit voltage	V	TIG 66 / Electrode 64	TIG AC 75.7 / TIG DC 65.8 / Electrode 65.8
Connection cable length	m	3	3
Device data			
Pulse rate	Hz	0.5 – 999	0.5 – 999
Ignition		High Frequency	High Frequency
Torch cooling		Gas	Gas / Water
Electrical data			
Overall performance	kVA	6.9/4.7	7.0/4.8
Power factor	cos phi	0.99	0.99
Current consumption TIG AC	A	–	19.9
Current consumption TIG DC	A	19.5	21.7
Current consumption electrode AC	A	–	28.9
Current consumption electrode DC	A	28.7	30.9
Connection voltage	V	110/230 /~50 Hz	110/230 /~50 Hz
Standards and authorisations			
Standard		EN 60974-1:2012, EN 60974-10:2014	
EMC - class		A	A
Dimensions and weights			
Dimensions (L x W x H) approx.	mm	545.5 x 190 x 360	545.5 x 190 x 360
Weight approx.	kg	12.4	14.4

TIG INVERTER CRAFT-TIG PRO 253 DC PULSE WELDING MACHINES FOR THE HIGHEST DEMANDS, ALWAYS THE RIGHT WAVE FOR YOUR TASK

UNIVERSALLY APPLICABLE

For welding all common types of electrodes

PROTECTION CLASS IP 21S

Ideally suited for assembly work thanks to protection class IP 21S, generally also for outdoor work

AREAS OF APPLICATION

Suitable for use on generators, for example in workshops, schools, metal construction, on building sites or for farmers

FAN

Quiet-running fan with good heat dissipation for long switch-on times

LC DISPLAY

Precise setting and display of welding parameters via large LC display

Equipment

TIG pulsing process
MMA process
LC display 4"
Single Spot
Multi Spot
Water cooling connection

CRAFT-TIG PRO 253 DC PULSE
WITH OPTIONAL TROLLEY



TIG PULSES

TIG pulsing at 999 Hz enables welding with reduced heat input

STAPLING FUNCTION

Equipped with stapling function 0.2 seconds

HF HIGH-FREQUENCY IGNITION

HF high-frequency ignition ignites during TIG welding without touching the workpiece

10 PROGRAMMES

storable

TUNGSTEN ELECTRODE

Adjustable diameter of the tungsten electrode

SCOPE OF DELIVERY:

Earth cable 25 mm² 4 m with 300 A terminal
TIG torch SR26, 4 m
Gas hose 12 x 6 mm, 4 m
Pressure reducer, large

OPERATION

-
- SELECT BUTTON**
▶ HF/TIG, Lift-Arc and MMA
 - SELECT BUTTON**
▶ 2T / 4T
 - SELECT BUTTON -**
▶ No Pulse / Pulse / SingLE Spot / Multi Spot
 - SELECTOR BUTTON JOB MEMORY**
 - PARAMETER SETTING**
▶ Gas lead time, starting current, current rise time
 - SELECT BUTTON**
▶ Welding current
 - PARAMETER SETTING**
▶ Electricity setback time, end of electricity, gas run-on time
 - WATER COOLING**
 - TUNGSTEN ELECTRODE SETTING**

Model		CRAFT-TIG PRO 253 DC Pulse
Art no.		1364253
Setting range		
TIG setting range	A	10 – 250
Setting range for electrode	A	10 – 250
Duty cycle		
Duty cycle at max. current 40°C TIG	%	60
Duty cycle at max. current 40°C, Electrode	%	60
Current at 100% duty cycle, 40°C TIG	A	195
Current at duty cycle 100% 40°C Electrode	A	195
Power consumption		
Power consumption TIG	kVA	6
Electrode power consumption	kVA	8.6
Electrical connection		
Required generator output	kVA	>12
Open circuit voltage	V	TIG 71.3 / Electrode 71.4
Connection cable length	m	3
Device data		
Pulse rate	Hz	0.5 – 999
Ignition		High Frequency
Torch cooling		Gas / Water
Electrical data		
Overall performance	kVA	12.8/10.0
Power factor	cos phi	0.66
Current consumption TIG DC	A	13.2
Current consumption electrode DC	A	18.2
Connection voltage	V/Hz	400/~50
Standards and authorisations		
Standard		EN 60974-1:2012, EN 60974-10:2014
EMC - class		A
Dimensions and weights		
Dimensions (L x W x H) approx.	mm	545.5 x 190 x 360
Weight approx.	kg	12.8



CRAFT-TIG PRO 253 DC PULSE



ASK FOR YOUR PERSONALISED OFFER!

WIRELESS HANDHELD REMOTE CONTROL



Designation	Art. no.
Cooling unit 400V / 4 litres (CRAFT-TIG PRO 253 DC Pulse only)	1174102
Cooling unit 230V (CRAFT-TIG PRO 201 AC/DC only)	1174101
Trolley (CRAFT-TIG Pro 201 AC / DC / CRAFT TIG PRO 253 DC only)	1174103
Earth cable 35 mm ² 4m 13 mm with 400 A terminal	1250235
Welding cable 25 mm ² complete with 260 A electrode holder, length 4 m, Coupling plug, Mandrel 13 mm	1250361
Argon/CO ² pressure reducer	1700050
Coolant SKF 15 5l - canister (ready-mixed)	1030105
Coolant SKF 15 10l - canister (ready-mixed)	1030110
Coolant SKF 15 25l - canister (ready-mixed)	1030125
Control cable complete with plug	1104011
Control cable plug 12-pin incl. contact pins	1104012
Remote foot control with 5 m connection cable	1174009
Adapter/coupling nut 1/4" AG x M12x1 IG, conical sealing	1104001

ACCESSORIES



Electrode cable 25 mm²



Pressure reducer



Earth cable 35 mm²



Remote foot control



Trolley



Coolant

TIG-INVERTER CRAFT-TIG PRO 323 / CRAFT-TIG PRO 503 AC/DC PULSE

BUILT USING MODERN INVERTER TECHNOLOGY

UNIVERSALLY APPLICABLE

For welding all common types of electrodes

PROTECTION CLASS IP 21S

Suitable for use on generators, for example in workshops, schools, metal construction, on building sites or for farmers

POWER FACTOR CORRECTION PFC

Power factor correction PFC for problem-free use even on cable reels

LC DISPLAY

Precise setting and display of welding parameters via large LC display

TIG PULSES

TIG pulsing at 999 Hz enables welding with reduced heat input

AC TRIANGLE WAVE WELDING OUTPUT

Reduced heat input for the same current setting, particularly useful for welding thin metal

ALTERNATING CURRENT SINE WAVE WELDING OUTPUT

Traditional AC TIG welding waveform, quieter, "softer" arc characteristics

ALTERNATING CURRENT SQUARE WAVE

Focused arc for maximum penetration, fast travel speed with optimum directional control

HF HIGH-FREQUENCY IGNITION:

HF high-frequency ignition ignites during TIG welding without touching the workpiece

STAPLING FUNCTION

Equipped with stapling function 0.2 s

MULTIVOLTAGE

Multi-voltage from 110 to 230 volts

10 PROGRAMMES

storable

FAN

Quiet-running fan with good heat dissipation for long switch-on times

WATER COOLING UNIT

with 7 litres and trolley as standard

SCOPE OF DELIVERY:

Earth cable 35 mm² 4 m with 300 A terminal (Pro 323)
 Earth cable 70 mm² 4 m with 500 A terminal (Pro 503)
 TIG torch SR18, 4 m water-cooled
 Gas hose 12 x 6 mm, 4 m
 Pressure reducer, large

OPERATION

- 1 **SELECT BUTTON**
▶ HF/TIG, Lift-Arc and MMA
- 2 **SELECTOR BUTTON - DC**
▶ Waveform selection button
- 3 **SELECTOR BUTTON - 2T / 4T MODE**
- 4 **SELECTOR BUTTON - NO PULSE / PULSE / SINGLE SPOT / MULTI SPOT**
- 5 **SELECTOR BUTTON JOB MEMORY**
- 6 **PARAMETER SETTING**
▶ Gas lead time, starting current, current rise time



- 7 **SELECT BUTTON**
▶ Welding current
- 8 **PARAMETER SETTING**
▶ Electricity setback time, end of electricity, gas run-on time
- 9 **WATER COOLING**
- 10 **TUNGSTEN ELECTRODE SETTING**
- 11 **USED FOR AC WELDING**
▶ Setting balance and frequency

Equipment

TIG pulsing process
MMA process
LC display 5"
Single Spot
Multi Spot
Water cooling unit 7 l / 400 V with 1 m connection cable
Trolley with two swivel castors at the front, two fixed castors at the rear and gas bottle holder


CRAFT-TIG PRO 323 AC/DC PULSE


ASK FOR YOUR PERSONALISED OFFER!

Model		CRAFT-TIG PRO 323 AC/DC Pulse	CRAFT-TIG PRO 503 AC/DC Pulse
Art no.		1364323	1364503
Setting range			
TIG setting range	A	10 – 320	10 – 500
Setting range for electrode	A	10 – 320	10 – 500
Duty cycle			
Duty cycle at max. current 40°C TIG	%	60	60
Duty cycle at max. current 40°C, Electrode	%	60	60
Current at 100% duty cycle, 40°C TIG	A	250	390
Current at duty cycle 100% 40°C Electrode	A	250	390
Power consumption			
Power consumption TIG	kVA	9	17
Electrode power consumption	kVA	12.5	31
Electrical connection			
Required generator output	kVA	>18	31
Open circuit voltage	V	TIG 74 / Electrode 74.5	MMA AC/DC 85, TIG AC 88, TIG DC 85
Connection cable length	m	4	4
Device data			
Pulse rate	Hz	0.5 – 999	0.5 – 999
Ignition		High frequency	High frequency
Torch cooling		Gas / Water	Gas / Water
Electrical data			
Power factor	cos phi	0.67	0.7
Current consumption TIG AC	A	18.7	34
Current consumption TIG DC	A	18.9	35.7
Current consumption electrode AC	A	23.5	42.7
Current consumption electrode DC	A	24.7	44.7
Connection voltage	V/Hz	400/~50	400±10% / 50/60
Standards and authorisations			
Standard		EN 60974-1:2012, EN 60974-10:2014	EN 60974-1:2012, EN 60974-10:2014
EMC - class		A	A
Dimensions and weights			
Dimensions (L x W x H) approx.	mm	700 x 260 x 484	710x 270 x 490
Weight approx.	kg	29.7	32.6

CRAFT-STICK PRO 201P, CRAFT-STICK PRO 253, CRAFT-STICK PRO 403 CEL WELDING MACHINES FOR THE HIGHEST DEMANDS

UNIVERSALLY APPLICABLE

For welding all common types of electrodes

PROTECTION CLASS IP 21S

Ideally suited for assembly work thanks to protection class IP 21S, generally also for outdoor work

AREAS OF APPLICATION

Suitable for use on generators, for example in workshops, schools, metal construction, on building sites or for farmers

VRD

Equipped with VRD for voltage reduction when idling

TIG DC FUNCTION

Enables simple TIG welding with contact ignition

LC DISPLAY

Precise setting and display of welding parameters

SEALED CIRCUIT BOARD

Sealed circuit board protects against moisture, salt spray and corrosion. Therefore also suitable for offshore use



FAN

Quiet-running fan with good heat dissipation for long switch-on times

CONSTANT WELDING CURRENT

Consistent deposition rate is achieved through constant welding current

HOT START

The arc ignites safely and is immediately stable thanks to the automatic, brief increase in welding current

ANTI-STICK

If the electrode accidentally sticks, the welding current is automatically reduced to prevent the electrode from annealing

ARC FORCE CONTROL

The internal monitoring of welding current and welding voltage resolves short circuits quickly and reliably, stabilising the arc and allowing the electrode to be processed without any problems

CRAFT-STICK PRO 161P / CRAFT-STICK PRO 201P:

With power factor correction PFC for problem-free use even on cable reels

CRAFT-STICK PRO 403 CEL

Suitable for welding with cellulose electrodes

OPERATION

- 1 **WELDING MODE BUTTON**
▶ MMA or TIG
- 2 **PARAMETER SETTING KNOB**
- 3 **DISPLAY**
▶ MMA or TIG
- 4 **DISPLAY**
▶ Welding current



- 5 **DISPLAY**
▶ Hot Start
- 6 **DISPLAY**
▶ Arc-Force
- 7 **DISPLAY**
▶ Welding current
Welding voltage

SCOPE OF DELIVERY:

Welding cable 4 m, with electrode holder
 Earth cable 4 m, with earth terminal

Equipment	PRO 161P	PRO 201P	PRO 253	PRO 403 CEL
Power factor correction	✓	✓		
LC display	2.8"	2.8"	2.8"	4"



CRAFT-STICK PRO 161P

CRAFT-STICK PRO 201P

CRAFT-STICK PRO 253

CRAFT-STICK PRO 403 CEL

Accessories for CRAFT-STICK PRO 161P/ 201P	Art. no.
Earth cable 4m 25mm ² terminal 200A	1250225
Earth cable 4m 35mm ² terminal 400A	1250235
Welding cable 4m 25mm ² Electrode holder 260A	1250361
Welding cable 4m 35mm ² Electrode holder 400A	1250362

Accessories for CRAFT-STICK PRO 403 CEL	Art. no.
Earth cable 4m 50mm ² terminal 600A	1250250
Earth cable 4m 70mm ² terminal 600A	1250270
Welding cable 4m 50mm ² Electrode holder 600A	1250363
Welding cable 4m 70mm ² Electrode holder 600A	1250364
Manual remote control	1174011

Accessories for CRAFT-STICK PRO 253	Art. no.
Earth cable 4m 35mm ² terminal 400A	1250235
Welding cable 4m 25mm ² Electrode holder 260A	1250361
Welding cable 4m 35mm ² Electrode holder 400A	1250362

Model		CRAFT-STICK PRO 161P	CRAFT-STICK PRO 201P	CRAFT-STICK PRO 253	CRAFT-STICK PRO 403 CEL
Art no.		1363162	1363201	1363253	1363403
Setting range					
Sheet thicknesses	mm	1.0 – 7.0	1.0 – 8.0	1.0 – 10.0	1.0 – 10.0
Setting range for electrode	A	10 – 160	10 – 200	10 – 250	10 – 400
TIG setting range	A	10 – 160	10 – 200	10 – 250	10 – 400
Duty cycle					
Duty cycle at max. current 40°C, Electrode	%	40	40	60	60
Duty cycle at max. current 40°C TIG DC	%	40	40	60	60
Current at duty cycle 100% 40°C Electrode	A	105	130	195	310
Current at duty cycle 100% 40°C TIG DC	A	105	130	195	310
Electrode					
Weldable electrodes	mm	1.6 – 4.0	1.6 – 4.0	1.6 – 5.0	1.6 – 8.0
Power consumption					
Electrode power consumption	kVA	5	7	8.5	16.4
Power consumption TIG DC	kVA	3.5	4.8	6.3	12.4
Electrical connection					
Required generator output	kVA	>10	>14	>18	>36
Open circuit voltage	V	TIG DC Electrode 67.2	TIG DC 65,2 Electrode 67.1	TIG DC 69,8 Electrode 66.8	TIG DC 86,2 Electrode 87.6
Connection cable length	m	3	3	3	4
Electrode current consumption	A	21.6	29.2	18.3	24.5
Current consumption TIG	A	14.3	19.8	13.1	18.1
Overall performance	kVA	5/3.5	7/4.8	14.0/11.0	22.4/17.3
Connection voltage	V/Hz	230 /~ 50	230 /~ 50	400 /~ 50	400 /~ 50
Dimensions and weights					
Dimensions (L x W x H) approx.	mm	450 x 150 x 280	450 x 150 x 280	545.5 x 190 x 360	532 x 216 x 405
Weight approx.	kg	7.4	7.4	13.7	19.9

CRAFT-CUT PRO 4IP, CRAFT-CUT PRO 63 CRAFT-CUT PRO 83, CRAFT-CUT PRO 123CNC PLASMA CUTTING FOR THE HIGHEST DEMANDS

UNIVERSALLY APPLICABLE

For stainless steel, aluminium, steel, non-ferrous metals, also with painted surfaces
From thin sheets to heavy plates

PERFORATED PLATE FUNCTION

The pilot arc allows perforated sheets to be cut quickly and easily

AREAS OF APPLICATION

Suitable for use on generators, e.g. in workshops, harbours, chemical plants, schools, metal construction, on construction sites, ships or for farmers

PILOT ARC CONTROLLER

The set welding current is only released after the arc has been ignited

SUITABLE FOR GENERATORS

Suitable for use on the generator



FAN

Quiet-running fan with good heat dissipation for long switch-on times

LC DISPLAY

Precise setting and display of welding parameters via LC display

FILTER PRESSURE REGULATOR

For setting the cutting pressure

WITH 2- AND 4-STROKE FUNCTION

CRAFT-CUT PRO 4IP:

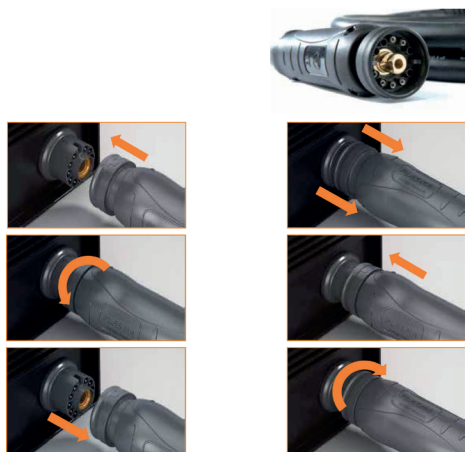
Power factor correction PFC for problem-free use on cable reels too

FROM CRAFT-CUT PRO 83 AND 123CNC:

Gouging plane

CRAFT-CUT PRO 123 CNC:

CNC interface for machine connection



Patented connection via transformer connector. Tool-free burner change



OPERATION

1 DIGITAL DISPLAY

2 MODE FUNCTION BUTTON

- ▶ 2T
- ▶ 4T
- ▶ Perforated plate
- ▶ Gouging (only for CRAFT-CUT PRO 83 and 123CNC)



3 COMPRESSED AIR TEST

4 CONTROLLER

- ▶ Amperage selection

Equipment	PRO 41P	PRO 63	PRO 83	PRO 123 CNC
LC display	2.8"	3.5"	3.5"	3.5"
PFC operation	✓			
CNC interface				✓

SCOPE OF DELIVERY:

Plasma torch 6m
Earth cable with earth terminal


CRAFT-CUT PRO 41P
CRAFT-CUT PRO 63
CRAFT-CUT PRO 83
CRAFT-CUT PRO 123 CNC

Including
Plasma torch S65

Pluscut 65 plasma torch
included

Pluscut 85 plasma torch
included

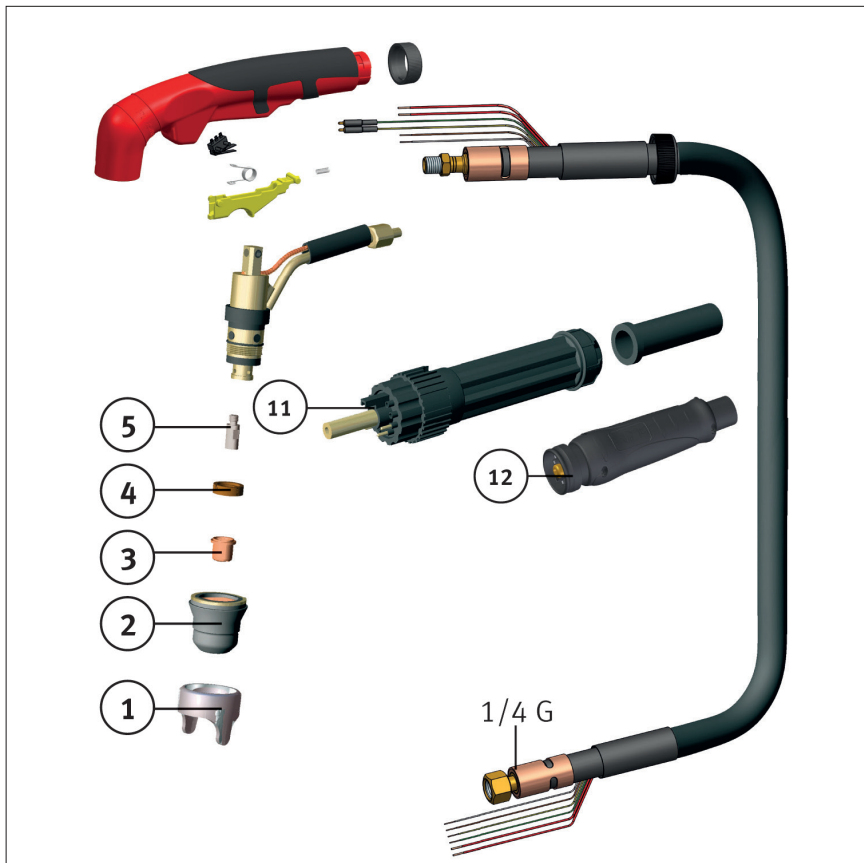
Pluscut 105 plasma torch
included



Model		CRAFT-CUT PRO 41P	CRAFT-CUT PRO 63	CRAFT-CUT PRO 83	CRAFT-CUT PRO 123 CNC
Art no.		1365041	1365063	1365083	1365125
Setting range					
Plasma setting range	A	20 – 40	20 – 65	20 – 80	20 – 120
Cutting performance					
Quality cut steel (ST37)	mm	15	25	30	40
Steel separating cut (ST37)	mm	20	30	35	50
Stainless steel quality cut	mm	15	25	30	40
Stainless steel separating cut	mm	20	30	35	50
Aluminium quality cut	mm	16	20	25	35
Aluminium separating cut	mm	16	22	30	40
Duty cycle					
Duty cycle plasma	%	50	90	60	60
Current at 100% duty cycle 40°C Electrode	A	30	61	65	95
Power consumption					
Power consumption plasma	kVA	4.8	7.8	11	17.5
Standards and authorisations					
Standard			EN 60974-1:2012, EN 60974-10:2014		
EMC - class		A	A	A	A
Labelling		CE	CE	CE	CE
Device data					
Air requirement	l/min	120	140	160	200
Operating pressure	bar	5	5	5	5
Electrical connection					
Required generator output	kVA	>4.8	>12.5	>14	>25
Open circuit voltage	V	327.9	297.6	375.6	387.1
Connection cable length	m	4	4	4	4
Power consumption	A	20	16.7	20.9	34.1
Connection voltage	V/Hz	110/230/ ~50	400/ ~50	400/ ~50	400/ ~50
Dimensions and weights					
Dimensions (L x W x H) approx.	mm	490 x 150 x 290	740 x 260 x 484	740 x 260 x 484	740 x 260 x 484
Weight approx.	kg	8.1	26.5	28.5	32.4

PLASMA TORCH S 65 AIR-COOLED

- ▶ High efficiency thanks to less reworking and lower consumption of wear parts
- ▶ The special handle shape with rubberised surface ensures optimum ergonomics and prevents the cutting torch from twisting in the hand
- ▶ Excellent cooling of wear parts leads to above-average service life
- ▶ Newly developed microswitch torch trigger for greater precision and convenience. A little finger pressure is all it takes to operate it



Technical data	S 65
Cooling	air-cooled
Specification	Central connection
Connection	Universal
Duty cycle DC	60 A, duty cycle 60%
Air pressure	4 bar
Compressed air consumption	100 l/min

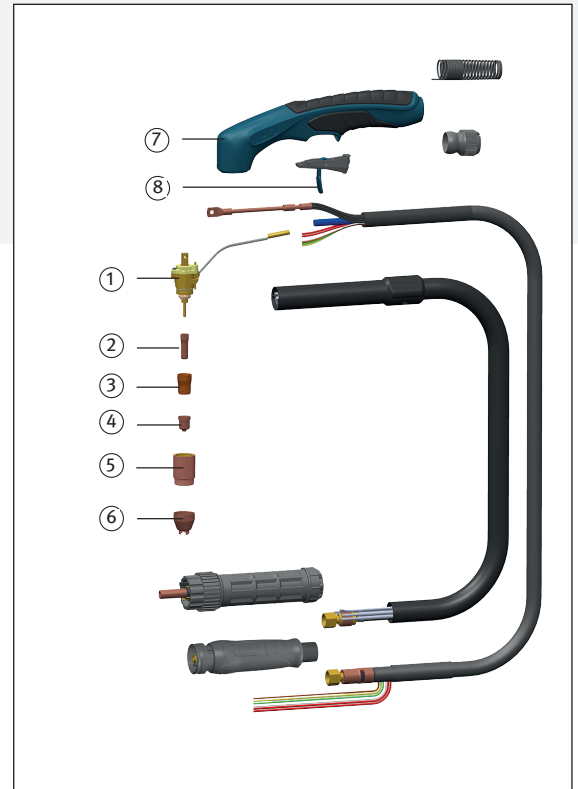
Torch	Art. no.
for CRAFT-CUT PRO 41P	
S 65 - 6 m incl. central connection	1332065

No.	Designation	Art. no.	PU ⁽¹⁾
5	Plasma electrode short	1332100	10
3	Cutting nozzle 0.8	1332101	10
3	Cutting nozzle 1.0	1332102	10
3	Cutting nozzle 1.6 for gouging	1332106	5
2	External protective nozzle 29 mm	1332103	2
1	Spacer	1332104	2
	Contact protection	1332105	2
4	Diffuser 4.6 mm	1333112	1
	Guide carriage	1333141	1
	Wear parts set* (Compatible for Art. no.: 1332065, 1075041, 1075042)	1332110	1
	Circular cutting device	1333121	1

PLUSCUT PLASMA TORCH INCLUDING TRANSFORMER ACTUATOR AIR-COOLED

- ▶ Best cutting results at high cutting speed
- ▶ High efficiency thanks to less reworking and lower consumption of wear parts
- ▶ Suitable for a wide range of applications, including standard, extended and gouging
- ▶ Newly developed microswitch torch trigger for greater precision and convenience. A little finger pressure is all it takes to operate it.

- ▶ Torch push-button with protection class IP67
- ▶ Excellent cooling of wear parts leads to long service life
- ▶ The special handle shape with rubberised surface ensures optimum ergonomics and prevents the cutting torch from twisting in the hand
- ▶ Unique transformer connector can be connected to or disconnected from the machine with one hand



Technical data	Pluscut 65	Pluscut 85	Pluscut 105
Cooling	air-cooled		
Specification	Flexible hose package		
Connection	Trafimector connection		
Duty cycle DC	65A	85A	105A
Air pressure	4.5 – 5 bar	4.5 – 5 bar	4.5 – 5 bar
Compressed air consumption	225 l/min	225 l/min	250 l/min

Pluscut torch	Art. no.
Pluscut 65 / 6 m	1335065
Pluscut 65 / 12 m	1335067
Pluscut 85 / 6 m	1335085
Pluscut 85 / 12 m	1335087
Pluscut 105 / 6 m	1335085
Pluscut 105 / 12 m	1335122

No.	Designation Pluscut 65/85/105	Art. no.	PU ⁽¹⁾
5	Cooling tube Pluscut 45-105A	1331701	2
	Electrode Pluscut 45-105A	1331702	5
4	Pluscut 45A cutting nozzle	1331704	5
	Torch body Pluscut 45-105A	1331706	1
2	Long protective cap Pluscut 45-105A	1331708	2
	Electrode long Pluscut 65-105A	1331711	5
8	Circular cutting device Pluscut 45-105A	1331740	1
	Microswitch kit Pluscut 45-105A Pluscut 45-105A	1331741	1
8	Micro switch Pluscut 45-105A	1331742	1

No.	Designation Pluscut 85	Art. no.	PU ⁽¹⁾
3	Pluscut 65A starter set	1331710	1
	Swirl ring Pluscut 45-85A	1331703	1
5	External protection nozzle Pluscut 45-85A	1331705	2
6	Protective cap Pluscut 45-85A	1331707	2
	Protective cap for gouging tools	1331714	2
5	Pluscut 85A starter set	1331720	1
	Pluscut 85A cutting nozzle	1331721	5
5	Cutting nozzle long Pluscut 85A	1331722	5
5	Cutting nozzle for gouging	1331723	5

No.	Designation Pluscut 65	Art. no.	PU ⁽¹⁾
3	Pluscut 45A starter set	1331700	1
	Swirl ring Pluscut 45-85A	1331703	1
5	External protection nozzle Pluscut 45-85A	1331705	1
6	Protective cap Pluscut 45-85A	1331707	1
	Pluscut 65A cutting nozzle	1331712	5
5	Cutting nozzle long Pluscut 65A	1331713	5
2	Protective cap for gouging tools Pluscut 65-85A	1331714	2
5	Cutting nozzle for gouging Pluscut 65A	1331715	5

No.	Designation Pluscut 105	Art. no.	PU ⁽¹⁾
3	Pluscut 105A starter set	1331730	1
	Swirl ring Pluscut 105A	1331731	1
5	Pluscut 105A cutting nozzle	1331732	5
5	Cutting nozzle long Pluscut 105A	1331733	5
2	Pluscut 105A external protection nozzle	1331734	2
6	Protective cap Pluscut 105A	1331735	2
	Protective cap for gouging tools Pluscut 105A	1331736	2
5	Cutting nozzle for gouging	1331737	5

(1) PU = quantity in pieces per packaging unit. Purchase only possible in PUs

cleanmax

C.LEANMAX 1, C.LEANMAX 2, C.LEANMAX 3 CLEANING DEVICE FOR ELECTROCHEMICAL METALWORKING

VERSATILE IN USE

Clean with a carbon fibre brush.
Signing and marking with carbon fibre brushes.
Light and dark signing

HIGH-PERFORMANCE BRUSHES MADE FROM CARBON FIBRES

Excellent quality for cleaning even hard-to-reach areas and long seams. For efficient cleaning of TIG welding seams in seconds

SIMPLE AND SAFE OPERATION

COMPACT AND ROBUST DESIGN

STURDY CARRYING HANDLE

FIELD OF APPLICATION

Use in the workshop and during assembly
Outstanding properties in the processing of stainless steel and other workable metals

BAYONET CATCH

Tools with bayonet lock, therefore very quick change possible

WELDED SEAMS

Removal of annealing colours and oxides from weld seams without the use of toxic and environmentally harmful pickling agents

MODERN PROCESSOR CONTROL

THREE POWER LEVELS

SIMPLE AND SAFE OPERATION

LANGUAGES

Simple setting in eight languages

PROGRAMMABLE BASIC PROCEDURES

Direct selection of up to three programmable basic procedures

DESIGN

Compact and robust design in a practical case format



C.leanmax 3



C.leanmax 2

ASK FOR YOUR PERSONALISED OFFER!

Model		C.leanmax 1	C.leanmax 2	C.leanmax 3
Art no.		1370050	1370085	1370090
Technical data				
Primary voltage	V	230	230	95 – 265
Output voltage alternating current	V	12	13	5 – 35
Output current max.	A	50	100	45
Power ~50 Hz	kW/V	0.5 / 230	0.85 / 230	0.9 / 95 – 265
Dimensions (L x W x H) approx.	mm	250 x 130 x 200	280 x 140 x 220	330 x 280 x 130
Weight approx.	kg	8.5	14	3.9

SCOPE OF DELIVERY:

Earth cable with terminal and plug $\varnothing 16\text{mm}/3\text{m}$
Handle cable $\varnothing 10\text{mm}/4\text{m}$
2x carbon fibre brush L 40mm
Carbon Fix L 40mm
Teflon handle
Electrolyte Clean Speed 500ml
Electrolyte Clean Special 500ml
CRG-Pol-Grease 20ml
Disassembly/assembly key
Wide-mouth container
Neoprene glove
Safety goggles (Transparent II)
Plastic case grey

VARIOPROTECT CT XXL-W-2 F-TC AIR

VarioProtect®

Automatic welding helmet; Welding in true colours and with clean breathing air

- ▶ Innovative side air duct
- ▶ No dry eyes thanks to minimised air flow
- ▶ Improved manoeuvrability in confined spaces
- ▶ Suitable for all common welding processes thanks to EN12941 / TH3 certification
- ▶ Convenient operation via external, detachable remote control

Technical data		VarioProtect CT XXL-W-2 F-TC AIR
Art no.		1657050
Response time light/dark	ms	0.04
Brightening time dark/light	s	0.1 – 0.9
Light level		Shade 4
Viewing window (W x H)	mm	100 x 60
Cassette (L x B x H)	mm	129 x 132 x 28
Filter cassette setting		Remote Control
Sensitivity levels		1 – 5
Grinding function/ cutting function		yes / Shade 5
Inner protective disc		PL-5010
TIG welding current min. / max.	A	>2 / 350
Dimensions (L x W x H) approx.	mm	230 x 260 x 320 mm
Weight approx.	kg	2.7



VARIOPROTECT GRIND

VarioProtect®

- ▶ Ideal for grinding applications, metalworking and woodworking
- ▶ Unrestricted and clear view
- ▶ Maximum wearing comfort thanks to optimum fit and easily adjustable headband
- ▶ Light weight



Technical data		VarioProtect GRIND/GRIND AIR
Art no.		1654200 / 1654206
Working temperature		-5 – +55 °C
Storage temperature		-10 – +55 °C
Lens power		1 mm
Standards		CE, ANSI, CSA, AS/NZS
Material		Nylon
Dimensions (L x W x H) approx.		350 x 250 x 190 mm
Weight approx.		385 g

VARIOPROTECT GRIND AIR

VarioProtect®

with connection for fresh air filter systems

- ▶ The perfect solution if you already have a welding helmet with extraction and need an additional grinding helmet with extraction

A fresh air unit is available as an optional extra!



Headband with connection for Schweißkraft fresh air filter systems

- ▶ for Article No. 1654050
- ▶ for Article No. 1654205

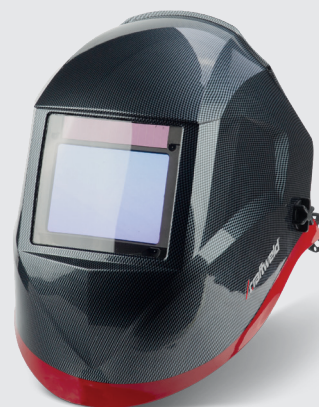


VARIOPROTECT XXL-W 2 TC

Automatic welding helmet - Welding in true colours!

- ▶ Top marks in the evaluation of optical class, scattering and homogeneity class and angular properties class
- ▶ Welding in true colours thanks to True Colour cassette
- ▶ Easy operation, even with welding gloves
- ▶ Suitable for electrode, MIG/MAG and TIG welding and grinding
- ▶ Large field of vision
- ▶ Welding mask with rear centre of gravity, very light, gentle on the head and neck

Technical data		VarioProtect XXL-W-2 TC
Art no.		1657005
Brightening time, dark-bright regulation		continuously variable
UV/IR protection		Protection level 16 (permanent)
Light level		Protection level 4
Material		Polyamide
Dimensions (L x W x H) approx.		244 x 295 x 323 mm
Weight approx.		430 g



VarioProtect®



***Best marks** in the evaluation of the optical class / scattering class / homogeneity class / class of angular properties

BEST WELDING RESULTS THANKS TO OPTIMALLY GROUND TUNGSTEN ELECTRODES

EG 1 - Electrode grinder

- ▶ Minimal material abrasion on the electrode of only 0.3 mm via built-in setting gauge
- ▶ This makes it possible to regrind the electrode up to 200 times instead of just 50-100 times.
- ▶ Does not anneal during the sanding process
- ▶ Integrated extraction system with P3 dust filter, providing optimum protection for the user
- ▶ Optimised for use in the workshop and during assembly
- ▶ Precise guidance of the electrode in a clamp holder
- ▶ Also for grinding short electrodes (up to 15 mm), e.g. for orbital welding systems
- ▶ A simple adjustment allows 3 grinding levels of the diamond disc can be used, therefore three times the service life of the disc
- ▶ Electrodes with metal drops can also be ground directly, which saves time and the cancellation of the electrode



Made in Germany

Technical data		EG 1
Art no.		1690100
Electrode Ø	mm	1.0 - 4.0
Electrode length min.	mm	22
Grinding angle stepless	°	15 - 180
Infinitely variable speed	min ⁻¹	8000 - 22000
Diamond disc Ø	mm	40
Power ~50 Hz	W/V	850/ 230
Weight	kg	3.8

Scope of delivery
• Filter housing and filter
• Electrode holder
• Diamond disc Ø 40mm
• Collets for electrodes 1.6/2.4/3.2 mm
• Operating tool
• Disposal bag for disposable filters
• In a plastic case

Accessories	Art. no.
Diamond disc 40 mm	1690102
Electrode holder	1690103
Collet 1.0 mm	1690105
Collet 1.6 mm	1690106
Collet 2.0 mm	1690107
Collet 2.4 mm	1690108
Collet 3.2 mm	1690109
Collet 4.0 mm	1690110
Filter cassette	1690117
Disposal bag	1690121
Switches	1690131

EG 4 - Electrode grinder

- ▶ Easy handling thanks to pre-set grinding angles and diameters
- ▶ Grinding angle 15°, 18°, 22.5° and 30° selectable
- ▶ Handy device, ideal for use in the workshop or during assembly
- ▶ Integrated 5-stage speed control via rotary wheel
- ▶ Easy to change grinding disc



Technical data		EG 4
Art no.		1692004
Electrode Ø	mm	1.0 - 4.0
Electrode length min.	mm	30
Grinding angle	°	15 - 30
Speeds 5-stage	min ⁻¹	0 - 11,000
Diamond disc Ø	mm	33.5
Electrical connection ~50 Hz	V	230
Dimensions (L x W x H) approx.	mm	340 x 76 x 76
Weight	kg	1.6

Scope of delivery
Grinding disc
Transport case

Accessories	Art. no.
Cover cap	1692080
Angle display	1692081
Grinding disc	1692082
Pair of carbon brushes	1692083
Switches	1692084
Transport case	1692085

EG 5 - Electrode grinder

- ▶ For the perfect grinding of tungsten electrodes
- ▶ Grinding angle infinitely adjustable from 0 to 60 degrees
- ▶ Stop for setting the correct sanding length integrated in the device
- ▶ Precise grinding in longitudinal direction, resulting in better ignition properties, stable arc and longer service life
- ▶ Problem-free grinding even with a length of only 50 mm, spherical caps or metal drops
- ▶ Clamping also possible with work gloves thanks to smooth-running knurled screw

Scope of delivery EG 5
• Diamond disc Ø 90mm
• One collet each 1.6/2.0/2.4/3.2/4.0 mm

Technical data		EG 5
Art no.		1692005
Electrode Ø	mm	1.6 - 5.0
Electrode length min.	mm	35
Grinding angle	°	15 - 60
Speed	min ⁻¹	6500
Diamond disc Ø	mm	90
Grain size		180
Power ~50 Hz	W/V	70 / 230
Dimensions (L x W x H) approx.	mm	225 x 150 x 195
Weight approx.	kg	4



Accessories	Art. no.
Diamond disc K180	1692050
Diamond disc K320	1692065
Electrode holder	1692051
Collet 1.6 mm	1692052
Collet 2.0 mm	1692053
Collet 2.4 mm	1692054
Collet 3.2 mm	1692055
Collet 4.0 mm	1692056
Collet 5.0 mm	1692057
Protective glass	1692058
Main switch	1692059
Rubber foot set	1692060
Gasket	1692061
Fastening screw	1692062
Spacer disc	1692063
Adjusting nut	1692064
Indicator	1692066

SPV series - Welding positioning device with manual operation

- ▶ For fast and convenient welding processing from all sides
- ▶ Turntable can be positioned vertically and horizontally
- ▶ Manual adjustment of the working height
- ▶ Easy to use



SPV 30



SPV 300

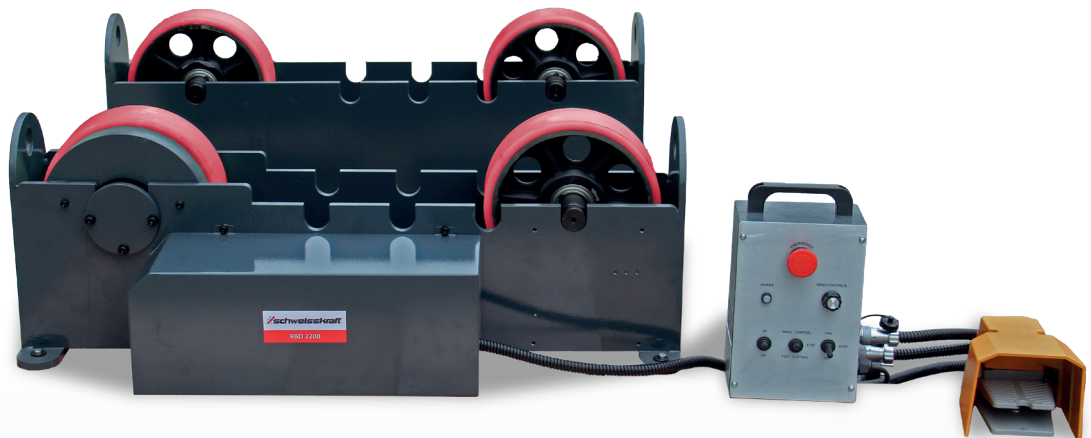


SPV 300 HWM

Technical data		SPV 30	SPV 300	SPV 300 HWM
Art no.		1540030	1540300	1540305
Table tilt angle	°	360	360	22.5 / 45 / 90
Horizontal / vertical load capacity	kg	360 / 260	300 / 150	300 / 150
Turntable diameter	mm	260	300 x 300	300 x 300
Dimensions (L x W x H) approx.	mm	630 x 350 x 280	1427 x 1,200 x 1,018	600 x 600 x 710
Weight approx.	kg	28	135	86

Series RBD 1200 / 2200 / 5000 - Roller block turning devices

- ▶ Precise and high-quality weld seams possible thanks to infinitely adjustable workpiece speed
- ▶ For machining cylindrical workpieces
- ▶ Foot switch for start/stop
- ▶ Adjustable direction of rotation



RBD 2200

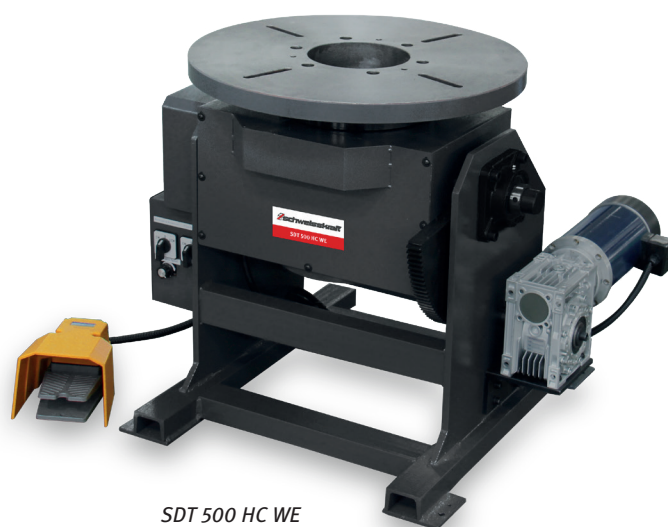
Technical data		RBD 1200	RBD 2200	RBD 5000
Art no.		1542120	1542220	1542500
Load capacity	kg	1200	2200	5000
Workpiece diameter	mm	20 – 800	101 – 1524	304 – 1234
Speed	min ⁻¹	0 – 1413	0 – 3641	0 – 1475
Drive unit (L x W x H)	mm	552 x 324 x 336	940 x 407 x 336	1624 x 525 x 457
Guide unit (L x W x H)	mm	450 x 229 x 336	940 x 294 x 336	1418 x 410 x 457
Switch box (L x W x H)	mm	170 x 120 x 250	170 x 120 x 250	170 x 120 x 250
Connection voltage ~ 50 Hz		230	230	230
Weight approx.	kg	86	220	325

SDT WE series – Welding turntables

- ▶ Simple operation
 - ▶ Simple angle adjustment via rotary knob
 - ▶ Infinitely adjustable disc speed
 - ▶ Clockwise/anticlockwise rotation
 - ▶ Control electronics protected by robust and closed housing
- ▶ Foot switch for start/stop
- From SDT 500WE:**
- ▶ Electric angle adjustment via rotary knob
- SDT 500 HC WE:**
- ▶ With hollow shaft Ø 170 mm



SDT 350 WM



SDT 500 HC WE



SDT 2500 WE

Accessories	Art. no.
Three-jaw chuck Load capacity 30 kg	1541351
Three-jaw chuck Load capacity 120 kg	1541352
Three-jaw chuck Load capacity 240 kg	1541353

Technical data		SDT 220 WM	SDT 350 WM	SDT 500 WE	SDT 500 HC WE	SDT 1500 WE	SDT 2500 WE	SDT 4000 WE
Art no.		1541220	1541350	1541500	1541505	1541915	1541925	1541940
Table tilt angle	°	0 – 135	0 – 135	-45 – 90	0 – 135	0 – 135	0 – 135	0 – 135
Infinitely variable speed	rpm	0 – 5	0 – 5	0 – 5	0 – 5	0.1 – 1.2	0.1 – 1.2	0.1 – 1.2
Horizontal/vertical load capacity	kg	220 / 100	350 / 120	500 / 250	500 / 250	1500 / 1000	2500 / 2000	4000 / 2700
Turntable diameter	mm	330	330	550	560	1000	1100	1200
Permissible welding current	A	80	300	300	120	800	800	800
Input power ~ 50 Hz	W / V	150 / 230	125 / 230	400 / 230	800 / 230	750 / 400	1500 / 400	1500 / 400
Dimensions (L x W x H) approx.	mm	470 x 400 x 450	410 x 470 x 475	770 x 650 x 660	790 x 690 x 660	1576 x 1190 x 990	1735 x 1276 x 1050	1805 x 1310 x 1150
Weight approx.	kg	34	38	220	230	1170	1550	1790

1) For information on transport surcharges see overleaf, details of TPZRS plus VAT
The products shown on this page are excluded from the "3-year Stürmer guarantee".

EASY-ARC - The welding robot that supports production

► **Mobile compact design:**

Space-saving, flexible and inexpensive to purchase

► **Extremely simple operation thanks to OTC Easy Teach control:**

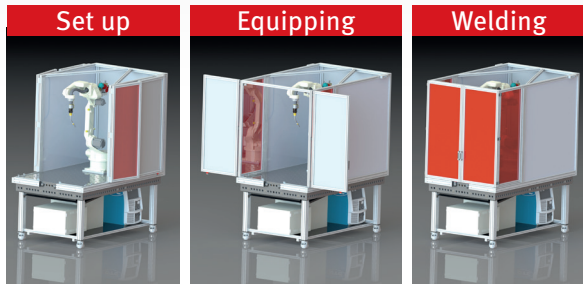
Minimal time required to create the welding programme, even without extensive training

► **Stable and precise welding robot:**

Reduced physical strain on employees and optimised, consistent welding quality

► **Safety technology according to CE:**

Protection against access and glare through electrically monitored lightweight protective housing



Come and see our capabilities for yourself, and ask us to demonstrate our welding robots!
craftweld@stuermer-maschinen.de
 Phone number: +49 (0) 951 0951 96 555



**SHORTAGE OF SKILLED LABOUR?
 OPTIMISED PRODUCTION!
 PRODUCTION COSTS UNDER PRESSURE?
 THE EASY-ARC WELDING ROBOT IS THE ANSWER!**

**WE ALSO HAVE COLLABORATIVE ROBOTS!
 JUST GET IN TOUCH WITH US!**

IHG - Powerful, mobile induction heaters with chassis

- Ideal for every workshop - for use in the automotive, railway and aviation industries, shipbuilding and industry in general, metalworking, maintenance, welding, repair workshops
- For heating before hardening, straightening, bending or forging pipes, round steel and profiles
- Localised heating of parts for soldering, pressing, bending and gluing

- Loosening smaller panelling parts and stuck and rusted parts such as bolts, nuts, screws, bearings, gears or similar
- Mobile device with chassis and integrated water cooling
- Inexpensive, safe and clean alternative to heating with a burner
- Power 12 kVA - high load factor
- Very quiet operation
- Flexible and simple operation

- Water-cooled induction coils
- Stepless power control from 10 to 100 per cent
- Timer for high repeatability
- Clear display for showing and setting the parameters
- Operating modes constant power CP and constant magnetic field CF selectable

- Scope of delivery IHG 10000:**
 Handle for coil with 4 m cable
 Round focus coil, 32 mm
 Cooling circuit filling 10 litres
- Scope of delivery IHG 13000:**
 Rectangular focus coil



IHG 10000



IHG 13000



Technical data		IHG 10000	IHG 13000
Art no.		1751000	1751005
Induction power	kW	10	13
Output frequency	kHz	18 – 45	18 – 35
Protection class		IP 21	IP 21
Coolant volume	l	10	17.5
Power consumption	kVA	12	19
Electrical connection	V/Hz	400 / ~50	400 / ~50
Dimensions (L x W x H) approx.	mm	400 x 760 x 700	850 x 540 x 960
Weight approx.	kg	58	96

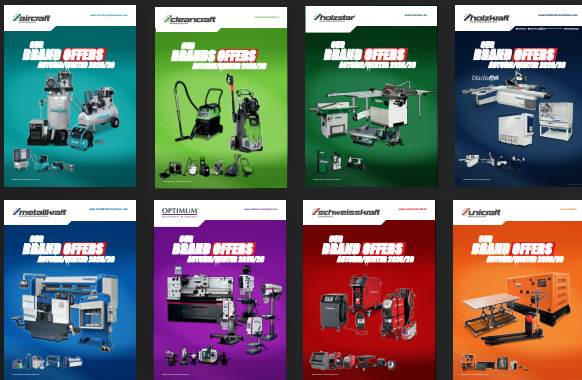


QUALITY WORK NEEDS QUALITY MACHINES



Craft Laser 1500 S
Laser welding machine
Art. no.: 1390015

DISCOVER OUR ENTIRE RANGE OF BRANDS
www.stuermer-maschinen.de



Stürmer Maschinen GmbH
Dr.-Robert-Pfleger-Str. 26 | D-96103 Hallstadt (Germany)
Phone +49 (0) 9 51 - 96 555 - 0
info@stuermer-maschinen.de | www.stuermer-maschinen.de

Aircraft Kompressorenbau GmbH
Gewerbestraße Ost 6 | A-4921 Hohenzell (Austria)
Phone +43 (0) 77 52 - 7 09 29 - 0 | www.aircraft.at

Offers for our customers who are entrepreneurs and not consumers. Our offers in this brochure are aimed exclusively at entrepreneurs who purchase the goods offered from us in connection with their business activities. This is the business basis for the purchase contracts concluded with us regarding the goods offered in this brochure and other related contracts; the conclusion of a contract with consumers within the meaning of § 13 BGB (German Civil Code) is expressly excluded. The so-called "instead" prices refer to the list price according to the currently valid brand main catalogue, available at www.stuermer-maschinen.de/aktuelles/downloads. Prices are recommended retail prices, subject to change, in €, plus VAT at the statutory rate, plus packaging, shipping, transport, unloading, assembly and, if applicable, instruction costs. These have been labelled and shown accordingly in the prospectus and are subject to VAT. Retailer sales prices may vary. No liability is accepted for printing errors, mistakes or incorrect presentation. Subject to technical and visual changes. Not all items in stock. Procurement possible at short notice. Delivered exclusively via specialised dealers. Information on scope, duration, content and guarantor can be found at www.stuermer-maschinen.de or requested from Stürmer Maschinen GmbH.

You'll always get a good offer here



The entire catalogue is protected by copyright. In addition, we register trademark, patent and design rights to protect our products. We vigorously oppose any infringement of our intellectual property, as far as this is possible in individual cases.